

CERTIFIED RECORD OF LAND CORNER MONUMENTATION

History of original corner establishment: \*

The corner was originally established by Rufus S. Moore in 1881 under Contract No. 382 dated March 23, 1881. The original notes state:  
S 89°51' West on a true line bet secs 11 and 14  
39.93 Set a pine post for 1/4 sec cor from which  
A pine 20 ins dia bears N 24° W 23 lks dist.  
A pine 17 ins dia bears S 58° E 27 lks dist.

DIAGRAM  
T10S R31E  
S11  
1/4---  
S14

Description of corner evidence found:

Found no evidence of the original pine post.  
A 26" P.Pine bears S58°26'W, 17.8 ft (S58°W, 27 lks) to estimated face, with a healed blaze.  
A Pine stump, deteriorated, bears N20°48'W 14.5 ft (N24°W, 22 lks) to estimated face, detached piece with scar.

Description of monument and accessories I establish to perpetuate the original location of this corner:

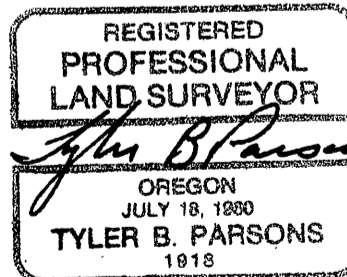
I reestablished this corner at record distance from the original bearing trees. Set a 2-1/2"x30" aluminum monument 20" in the ground in a mound of stone.  
I establish a new bearing tree:  
A 10" P.Pine bears N23°E, 53.3 ft, scribed 1/4S11BT.

T10S R31E  
S11  
1/4---  
S14  
PLS1918  
1989

Sun Cadastral Survey  
Contract No.: 53-04H1-7-4011  
Project No.: 8722K  
Field Book: 7-28  
Work Accomplished: 4/1/89  
Witnesses: Louise Parsons

New BTs have 3/4" brass washers marked PLS1918 attached to the BT blaze, faces and bands painted with red tree marking paint, and BT tags and Attention or Land Survey Monument signs. A steel fence post with Attention or Land Survey Monument sign is driven approximately 3-5 feet from the corner.

PARSONS SURVEYING  
1915 S.E. Stone Street  
Corvallis, OR 97333  
(503) 752-7515



Office of COUNTY SURVEYOR County of GRANT  
State of OREGON, I hereby certify that the within instrument was filed in this office for record on the 26 day of June, 1989

Robert D. Baggett by \_\_\_\_\_  
(COUNTY OFFICIAL) (DEPUTY)